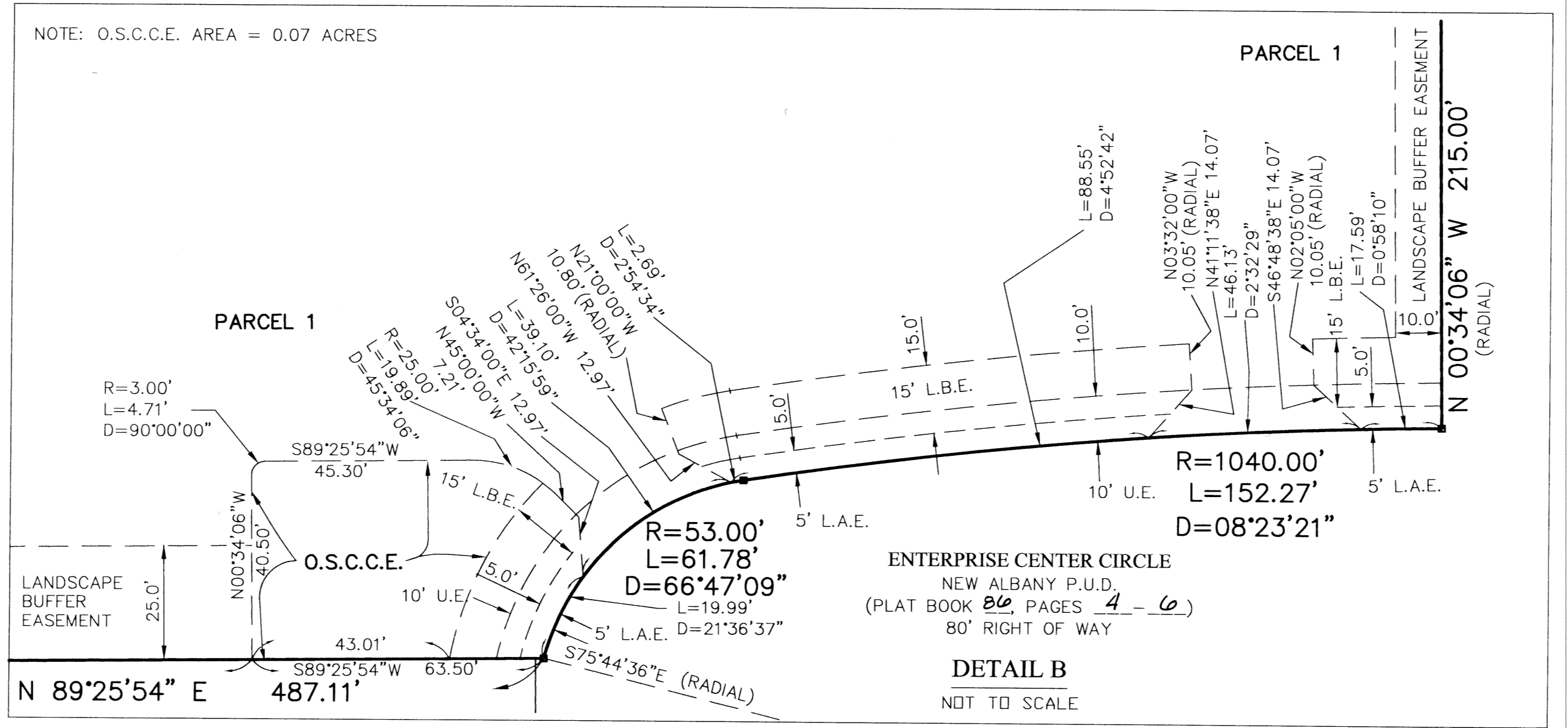
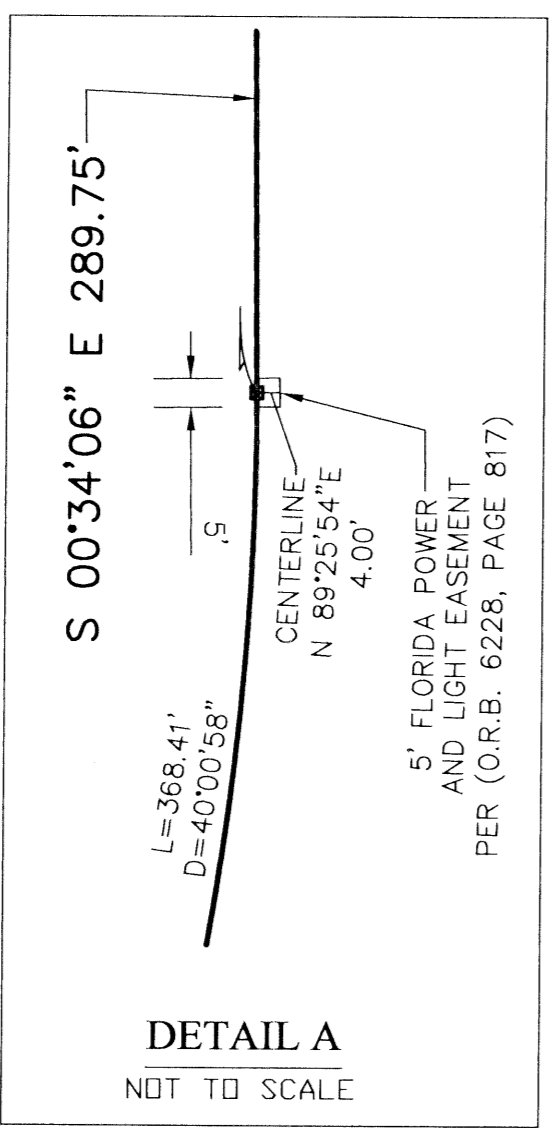
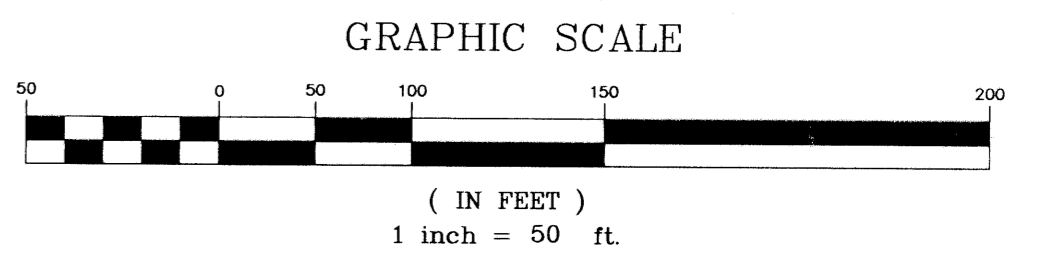
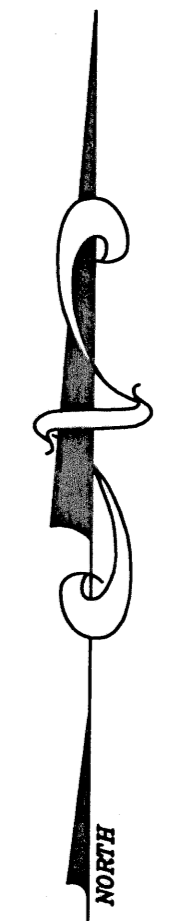
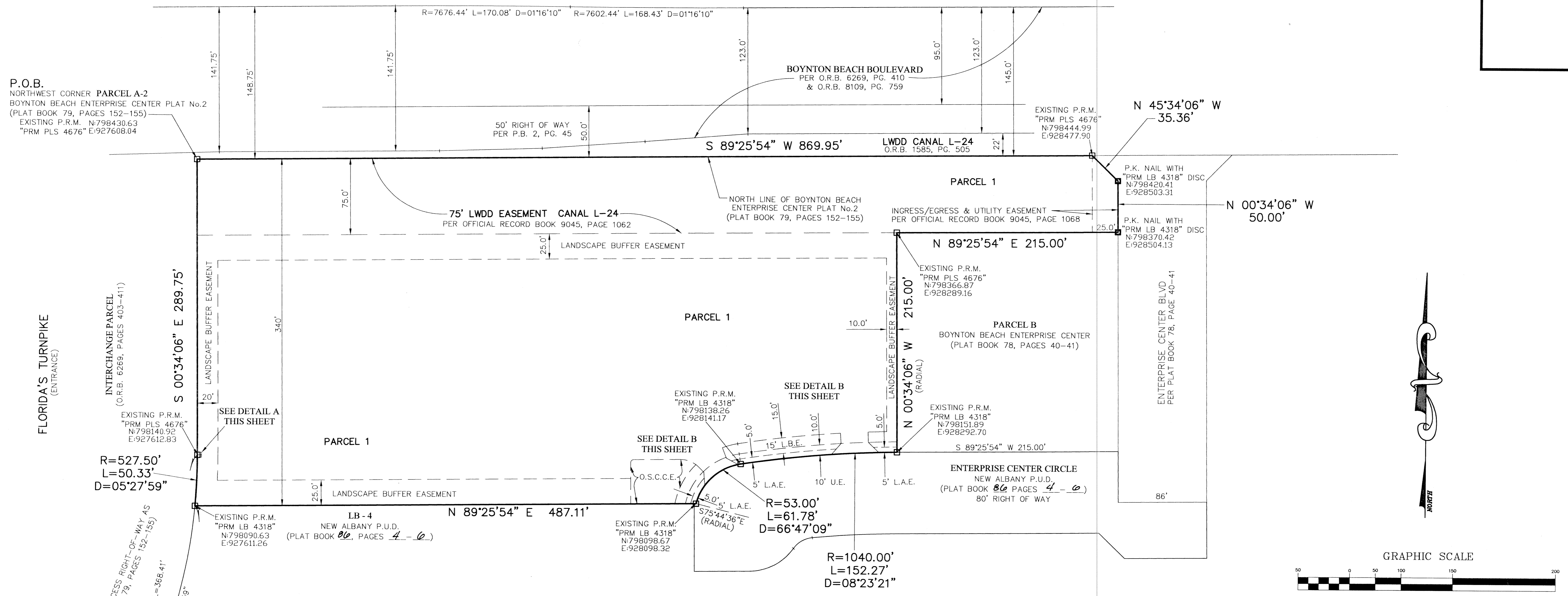


SHOPPES AT NEW ALBANY M.U.P.D.
 BEING A REPLAT OF A PORTION OF PARCEL A-2,
 BOYNTON BEACH ENTERPRISE CENTER PLAT No. 2, AS RECORDED IN
 PLAT BOOK 79, PAGES 152 THROUGH 155 OF THE PUBLIC RECORDS OF PALM BEACH COUNTY,
 FLORIDA IN SECTION 28, TOWNSHIP 45 SOUTH, RANGE 42 EAST, BEACH COUNTY,
 PALM BEACH COUNTY, FLORIDA
 SHEET 2 OF 2
 APRIL 1999



- LEGEND:**
- R = RADIUS
 - L = ARC LENGTH
 - D = DELTA (CENTRAL ANGLE)
 - PC = POINT OF CURVATURE
 - PT = POINT OF TANGENCY
 - PSM = PROFESSIONAL SURVEYOR & MAPPER
 - PLS = PROFESSIONAL LAND SURVEYOR
 - N = NORTHING (GRID)
 - E = EASTING (GRID)
 - = PERMANENT REFERENCE MONUMENT "PRM LB 4318"
 - = PARKER & KALON NAIL WITH DISC "PRM LB 4318"
 - L.B.E. = LANDSCAPE BUFFER EASEMENT
 - O.R.B. = OFFICIAL RECORD BOOK
 - P.O.B. = POINT OF BEGINNING
 - L.A.E. = LIMITED ACCESS EASEMENT
 - O.S.C.C.E. = OPEN SPACE CORRIDOR CONSERVATION EASEMENT

SECTION: Shoppes at New Albany
 PAGE 12
 PLAT BOOK 79
 ZONING P.U.D. B
 SE 98-3
 TAX 450
 PUD NAME: Shoppes at New Albany

SHOPPES AT NEW ALBANY M.U.P.D.

NICK MILLER, INC.
Surveying & Mapping Consultants

SUITE 105
 2560 RCA BLVD.
 PALM BEACH GARDENS, FLORIDA 33410
 TEL 561 627-5200 FAX 561 627-0983
 D.B.P.R. LICENSED BUSINESS No. 4318

SHEET NO. **2 of 2**

SCALE: 1" = 50'
 DATE: APRIL 1999
 JOB NO. 98055B
 FILE: PAGE_2.DWG